

The Tier 3 service provides:

- Comprehensive specialist substance misuse assessment
- Care plan discussed and agreed with young person. There are three main areas of intervention:
 - Psychosocial: enhanced motivational interviewing, counselling, relapse prevention, family work, access to specialist mental health services
 - Specialist harm reduction: access to needle exchange, advice on safer injecting, BBV testing and support
 - Pharmacological: substitute prescribing, detoxification regime, psycho-pharmacological prescribing for dual diagnosis/mental health needs
- Transition or discharge into appropriate services e.g. Targeted Youth Service, Adult Mental Health, and/or Adult Drug & Alcohol Service -Turning Point
- “Orange Card” system to enable a fast-track re-referral for young people who may need further specialist interventions

How to refer to the service and contact details

Complete a Request for Involvement Form, available on the Somerset Partnership: http://www.sompar.nhs.uk/children_young_people/requests_for_involvement.aspx and send to the Referrals Assessment Clinician (RAC worker) in your local CAMHS team. Telephone advice is also available from CAMHS or directly from the Specialist Substance Misuse Worker in your area.

CAMHS West:

(Taunton Deane, Sedgemoor and West Somerset)
Foundation House, Wellsprings Road, Taunton TA2 7PQ
Tel: 01823 368368 Fax: 01823 368554 Specialist Substance Misuse Workers: Esther Hayes and Matt Sharp

CAMHS Mendip:

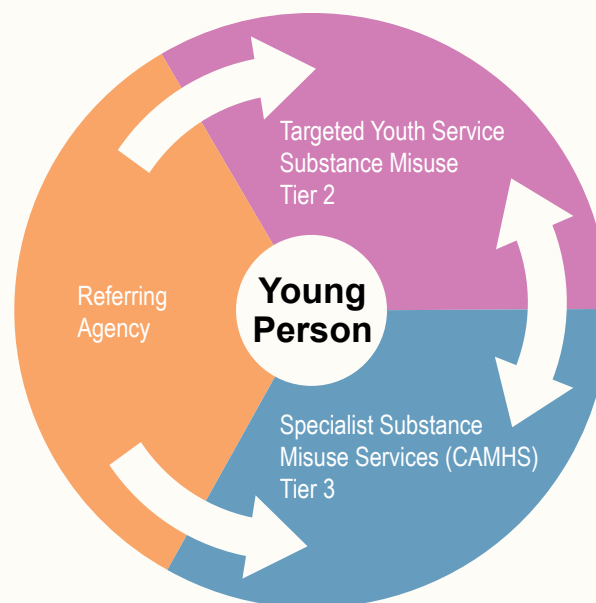
Priory House, Priory Health Park, Glastonbury Road, Wells BA5 1TL Tel: 01749 836561 Fax: 01749 836563
Specialist Substance Misuse Worker: Claire Davey

CAMHS South Somerset:

Balidon Centre, Summerlands, Preston Road, Yeovil BA20 2BX Tel: 01935 384140 Fax: 01935 411725
Specialist Substance Misuse Worker: John Turner

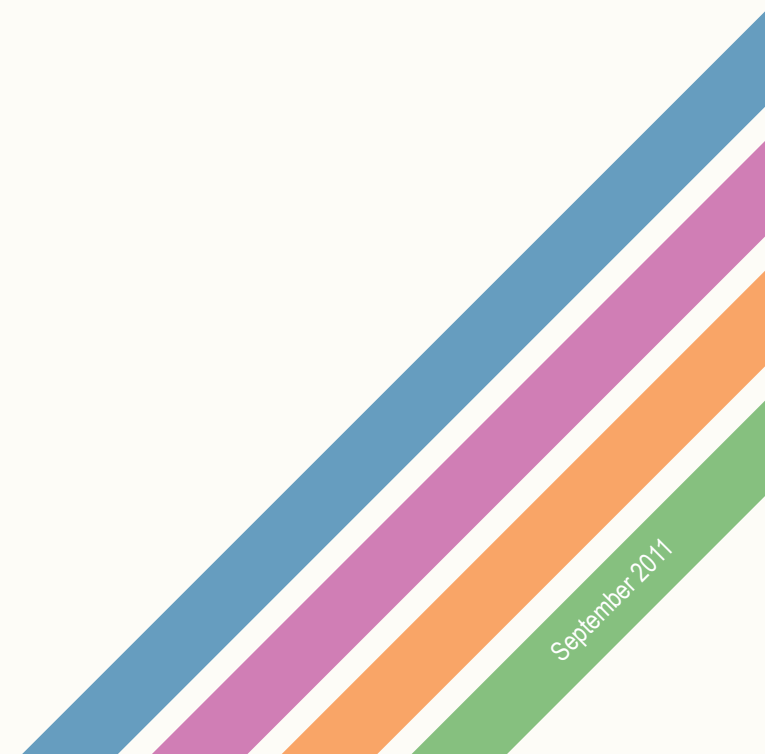
Working together

The staff working in Tier 2 and Tier 3 services work together to ensure young people access the service that best meets their changing needs. This often means using motivational and engagement skills to support the young person to access either level of service and move between the tiers with the aim of helping them achieve positive outcomes in their lives.

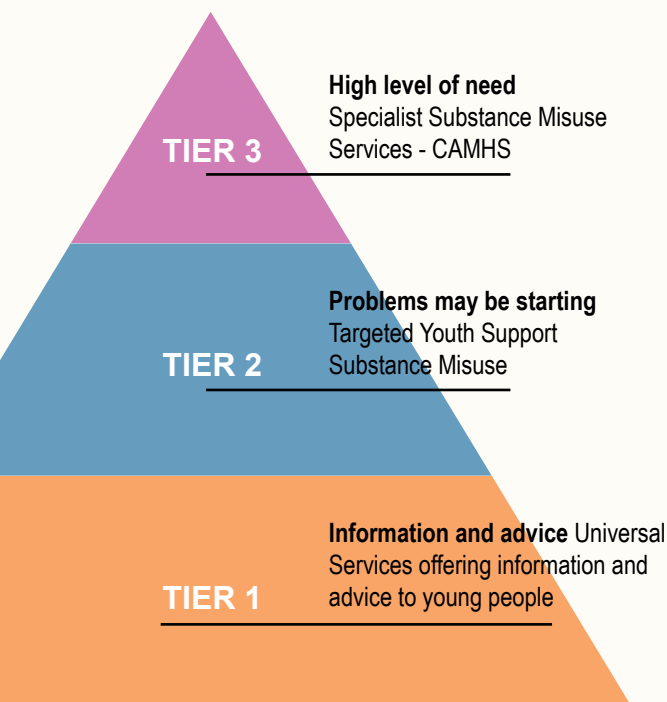


Substance misuse (drugs and alcohol) services for young people in Somerset

Information for professionals:
on what services are available
and how to access them



There are a range of services in Somerset for young people who may have problems with drugs and alcohol. These services are divided into three main levels - the more serious the problem, the higher the level, as shown in this diagram:



Tier 1 – Universal Services

Universal Services are focussed on providing information and advice to all young people about drugs and alcohol and will signpost to other help if it is needed. This is available through for example schools and colleges, by GPs and school health clinics, by youth workers in a local community or websites such as FRANK <http://www.talktofrank.com>

Tier 2 – Targeted Youth Support – Substance Misuse

The Targeted Youth Service works with young people aged 13 -19 years old, where drug and alcohol problems are beginning to impact on young people's lives (e.g. poor school attendance, lack of motivation linked to alcohol or drug use, increasingly risky behaviours).

The Tier 2 service provides:

- Assessment of needs
- Structured interventions which aim to reduce the impact and minimise the harm related to the use of a drugs and alcohol and prevent escalation to more serious or high risk drug or alcohol misuse
- Active identification and targeting of young people in vulnerable groups as well as taking appropriate referrals
- Drug and alcohol educational group work for identified groups of vulnerable young people
- Support for children of drug and alcohol using parents through the Hidden Harm for Young People – HHYPE group
- Referral to Specialist CAMHS or Adult Substance Misuse services if required

How to refer to the service and contact details

This service is available in each area of the county. The individual workers are based within Targeted Youth Support and the Youth Offending Service.

Contact the substance misuse worker in your area for more information or to make a referral.

Rachel Attwood – South Somerset

07917 813437 RAttwood@somerset.gov.uk

Current vacancy – Sedgemoor

07887 956215

Stuart Coleman – Taunton and West Somerset

07818 580630 STColeman@somerset.gov.uk

Chris Stonard – Mendip

07771 541801 CStonard@somerset.gov.uk

or call the YOT Duty Number on 01458 449112

Tier 3 – Specialist Substance Misuse Service (CAMHS – Somerset Partnership NHS Foundation Trust)

The reasons for referring young people to the Specialist Substance Misuse Service will include evidence, or a high probability of, the following increased risk areas:

- Problematic and/or dependent substance misuse
- Co-morbidity/dual diagnosis – i.e. concerns about mental health (including depression, suicide risk, psychosis)
- Deterioration in physical health
- Opiate or crack use
- Any intravenous use
- High risk means of funding substance misuse (e.g. prostitution)
- Blood borne virus (BBV) – including HIV, Hep B or C
- Recognition of predictive risk factors (e.g. parental mental health or substance misuse – active or historical)